



Technical Service Information Bulletin

June 7, 2002

Title:

MIDTRONICS BATTERY TESTER SOFTWARE UPDATE

Models:

All Models & Model Years Through Current

SS002-02

SPECIAL SERVICE TOOLS

Introduction The internal software of the Midtronics Battery Tester can now be periodically updated to support future models. New updates will include new battery warranty codes and testing information.


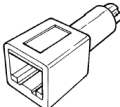
The Technical Information System (TIS) will be the primary distribution method for battery tester software updates. Utilizing the new Midtronics Update Wizard (MUW) and the new essential SST (Midtronics Battery Tester Adapter), you will be able to quickly and easily update your Midtronics Battery Tester.

This bulletin will show you how to use and install the Midtronics Update Wizard to update the Midtronics tester software.

Applicable Vehicles

- All models and model years through current.

Required Tools & Material

SPECIAL SERVICE TOOLS (SSTs)	PART NUMBER	QUANTITY
Midtronics Battery Tester* 	00002-MP815-L	1
Midtronics Battery Tester Adapter* 	00002-DMPUC	1

* Essential SSTs.

Warranty Information

OP CODE	DESCRIPTION	TIME	OPN	T1	T2
N/A	Not Applicable to Warranty	—	—	—	—

Process Overview

The Midtronics Battery Tester Software Update is a 2-step process:

1. Installing the Midtronics Update Wizard (MUW).

The Midtronics Update Wizard (MUW) is an application that only needs to be installed on the PC one time. This bulletin will provide the steps to install the MUW.

2. Using the Midtronics Update Wizard (MUW).

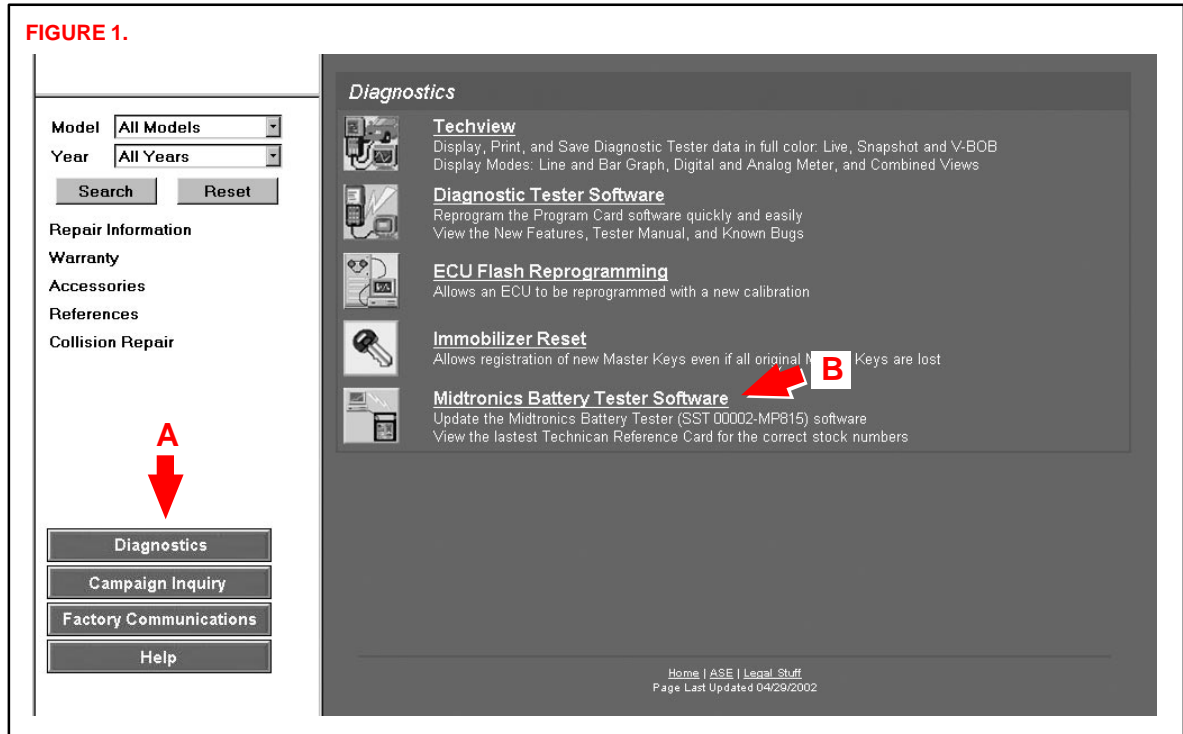
The Midtronics Update Wizard (MUW) will be used with each battery tester software update. The Update Wizard will walk you through each step to connect the PC to the tester and perform the update.



**Operation
Procedure:
Preparation****Before Installation or Use of the Midtronics Update Wizard (MUW):**

Steps A and B are required to begin the update process. (Refer to Figure 1.)

- A. Open TIS (Technical Information System) and go to the “Diagnostics” section.
- B. Click on the text “Midtronics Battery Tester Software.”

FIGURE 1.

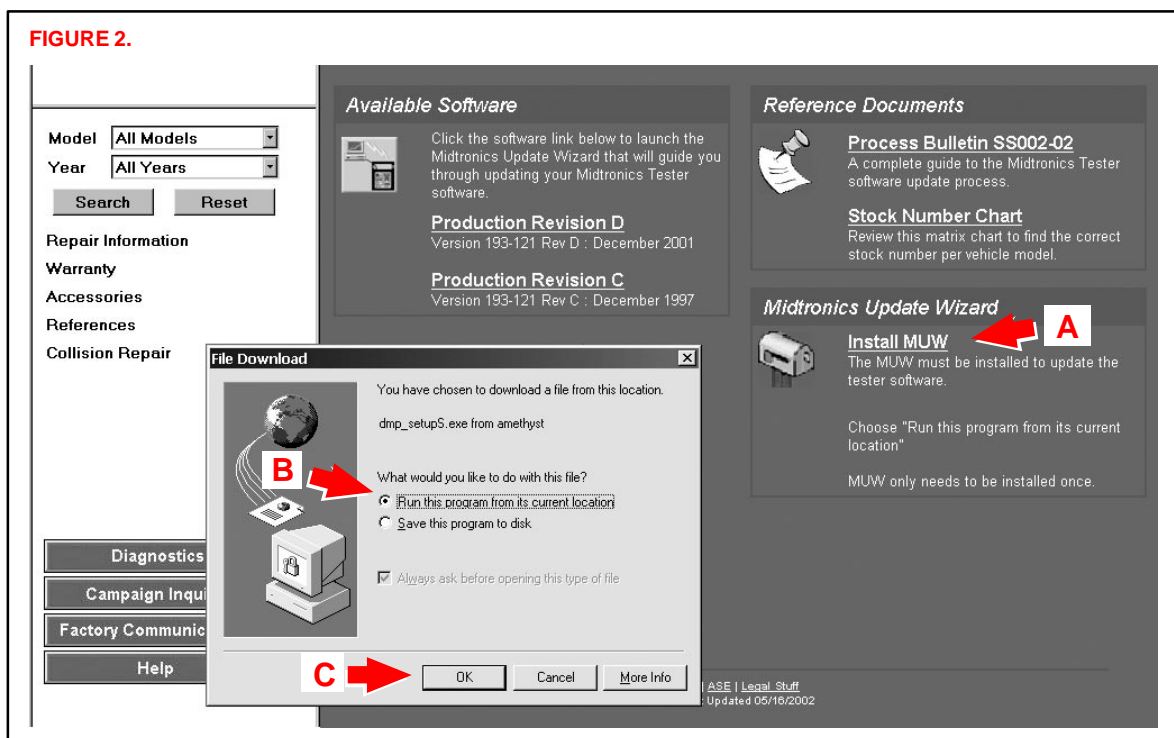
Operation
Procedure

1. Installing the Midtronics Update Wizard (MUW).

NOTE:

The Midtronics Update Wizard only needs to be installed once and must be installed before the rest of the update process can take place. If this step is already complete, continue on to step 2.

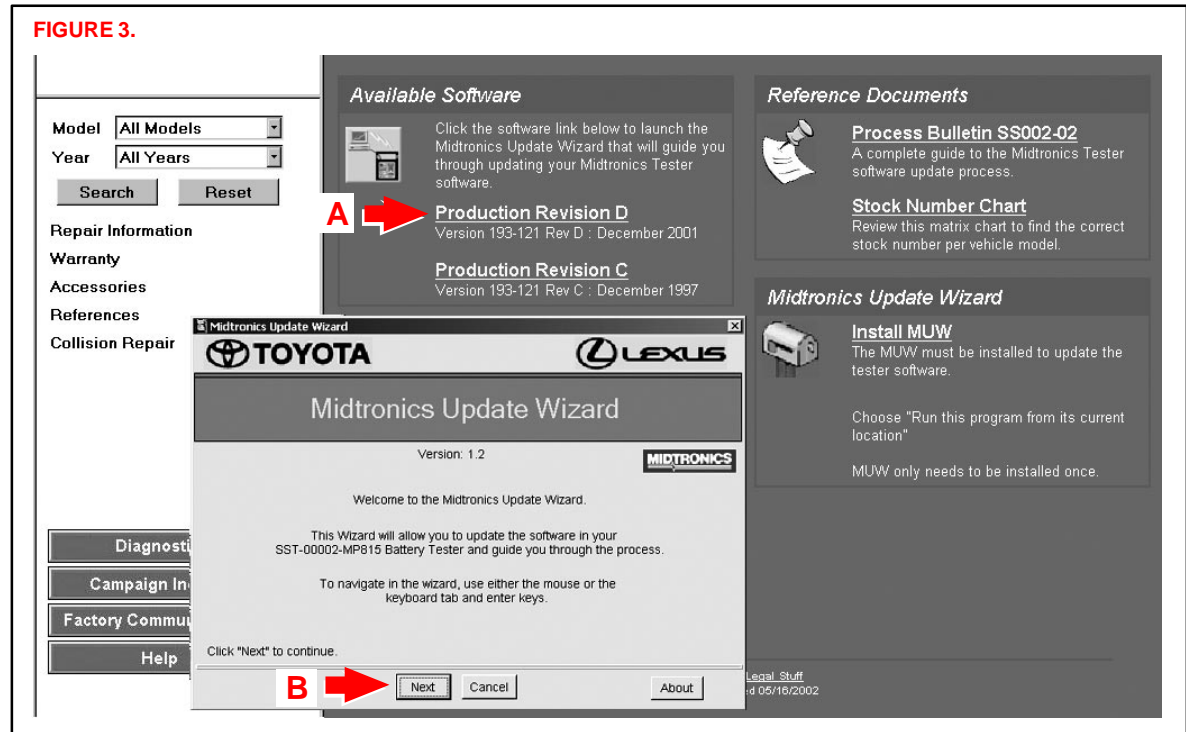
- A. Click on the text “Install MUW.” (Figure 2.)
- B. The file download window will appear. Click on “Run this program from it’s current location.”
- C. Click the “OK” button.
- D. Allow the Update Wizard to perform its self–installation. This will take only a few minutes.

FIGURE 2.

**Operation
Procedure**
(Continued)

2. Using the Midtronics Update Wizard (MUW).

- A. Click on the latest version of production software. (Figure 3.) This will begin the software update process.
- B. The next screen to appear will be the first screen of the software update. Click “Next” to continue.



**Operation
Procedure
(Continued)**

- C. Enter the serial number of the battery tester then click "OK." (Figure 4.)

FIGURE 4.

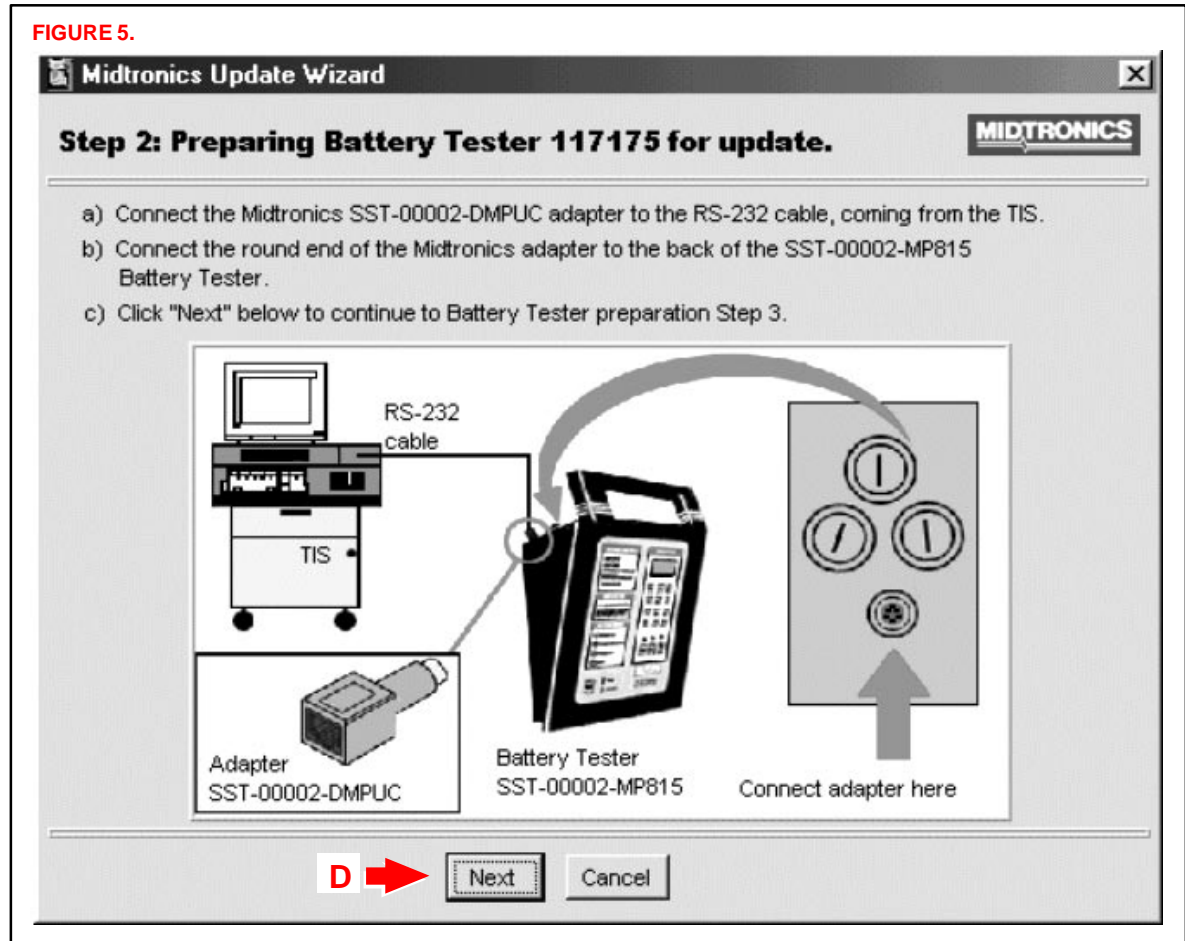
**Operation
Procedure**
(Continued)

- D. Connect the Midtronics Battery Tester to TIS as instructed (Figure 5), then click "Next."

NOTE:

Connecting the Midtronics Battery Tester to the TIS station will require the use of SST 00002–DMPUC. This is an adapter that allows the TIS RS–232 cable to plug into the Battery Tester. (Figure 5.)

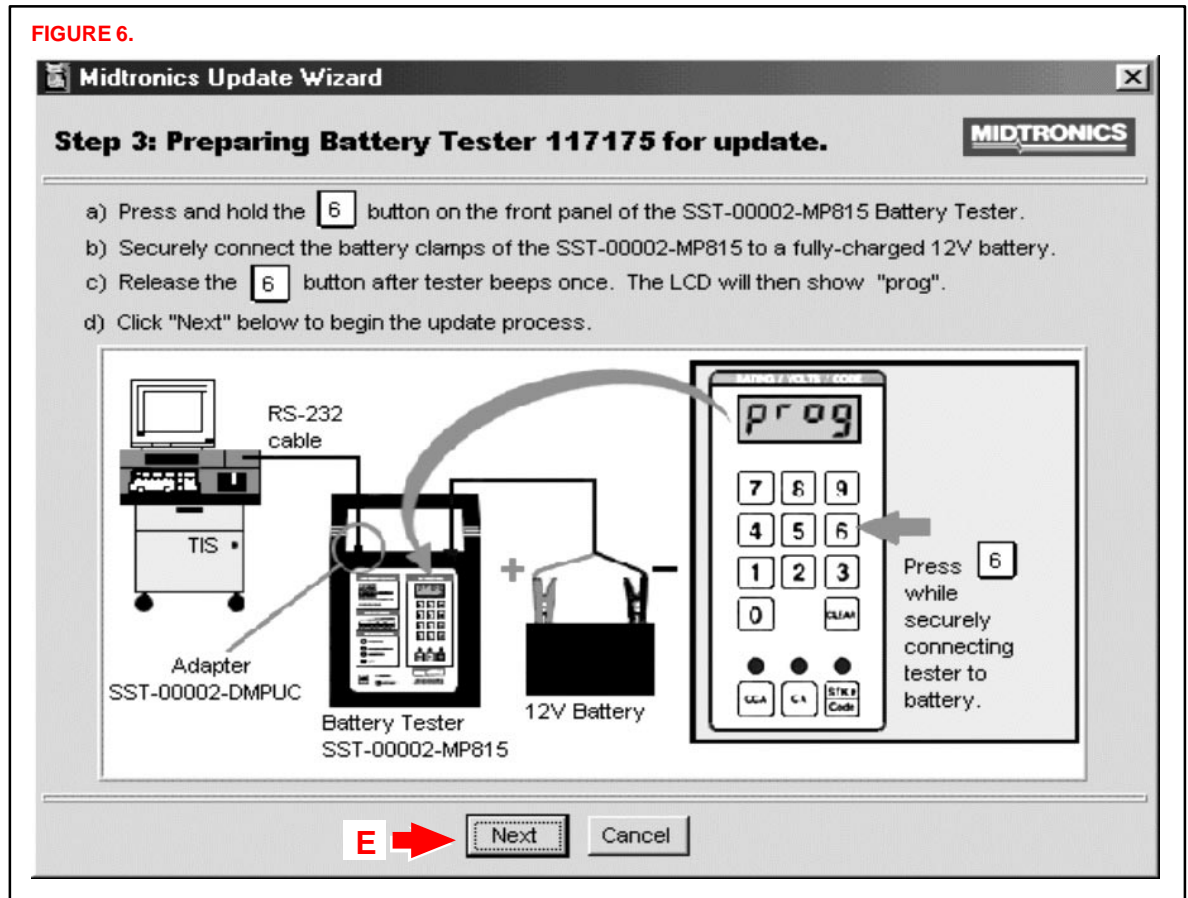
FIGURE 5.



**Operation
Procedure**
(Continued)

- E. Follow the instructions to put the Midtronics Battery Tester into the correct mode (Figure 6), then click “Next.”

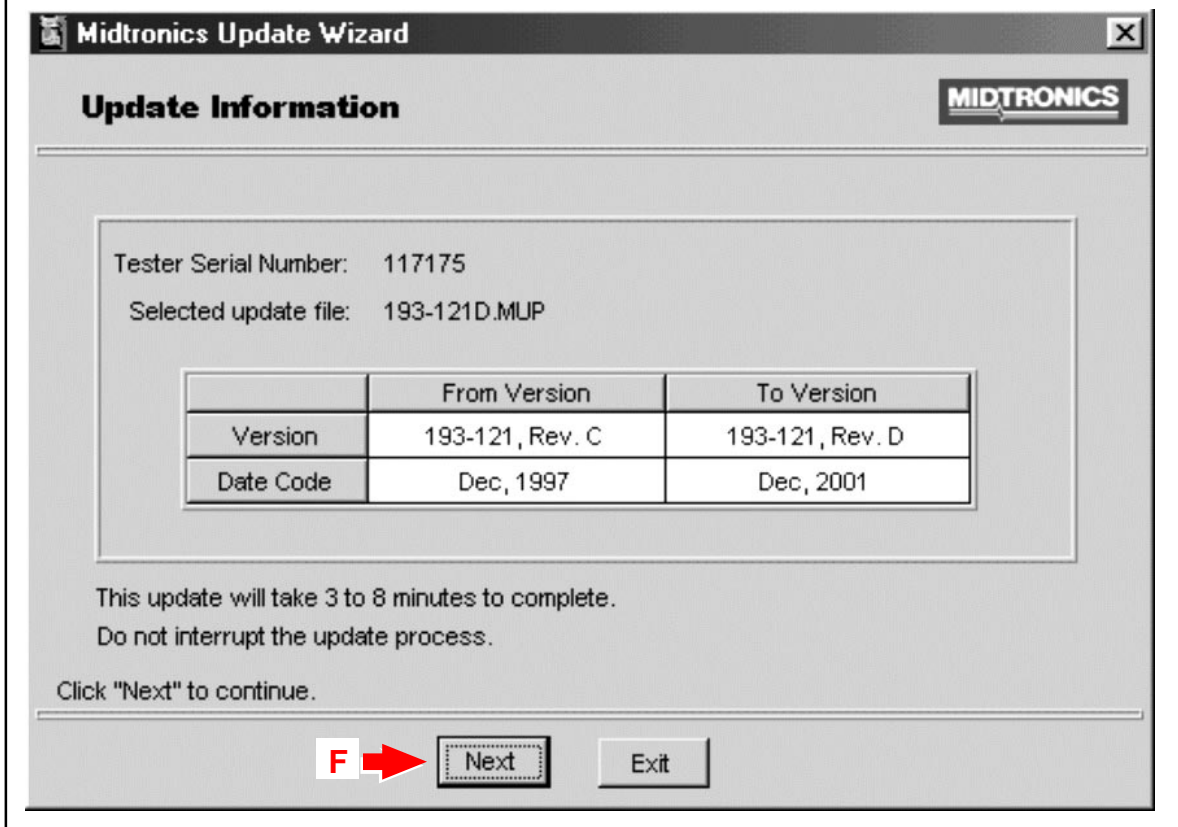
FIGURE 6.



**Operation
Procedure**
(Continued)

F. Confirm the software version and click “Next.” (Figure 7.)

FIGURE 7.



Figures 7–1 and 7–2 are confirmation dialogs that will pop up over the Update Information window (Figure 7) when:

- The update file is an older revision level than that found in the battery tester (Figure 7–1) or
- The update file is the same revision level as that found in the tester (Figure 7–2).

Click the “Yes” button to clear the pop-up dialog and continue with the update.

FIGURE 7-1.

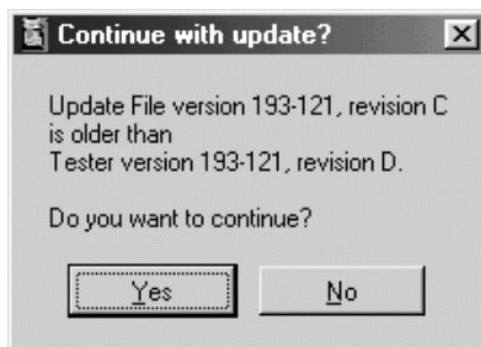
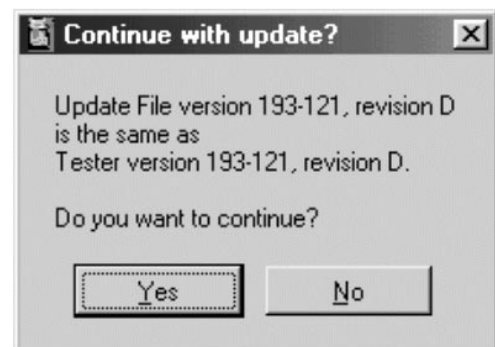


FIGURE 7-2.



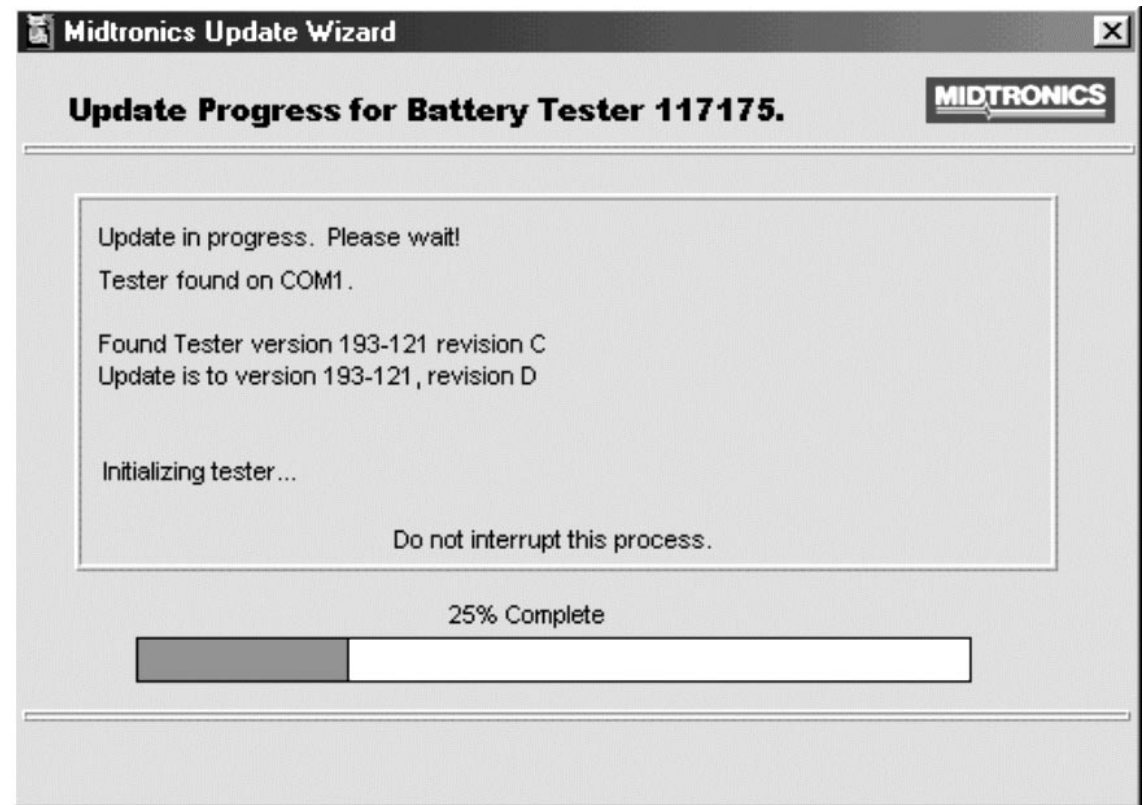
**Operation
Procedure**
(Continued)

- G. The Midtronics Update Wizard (MUW) will now update the Midtronics Battery Tester software. (Figure 8.)

NOTE:

Do not interrupt this process (it will take approximately 5 minutes).

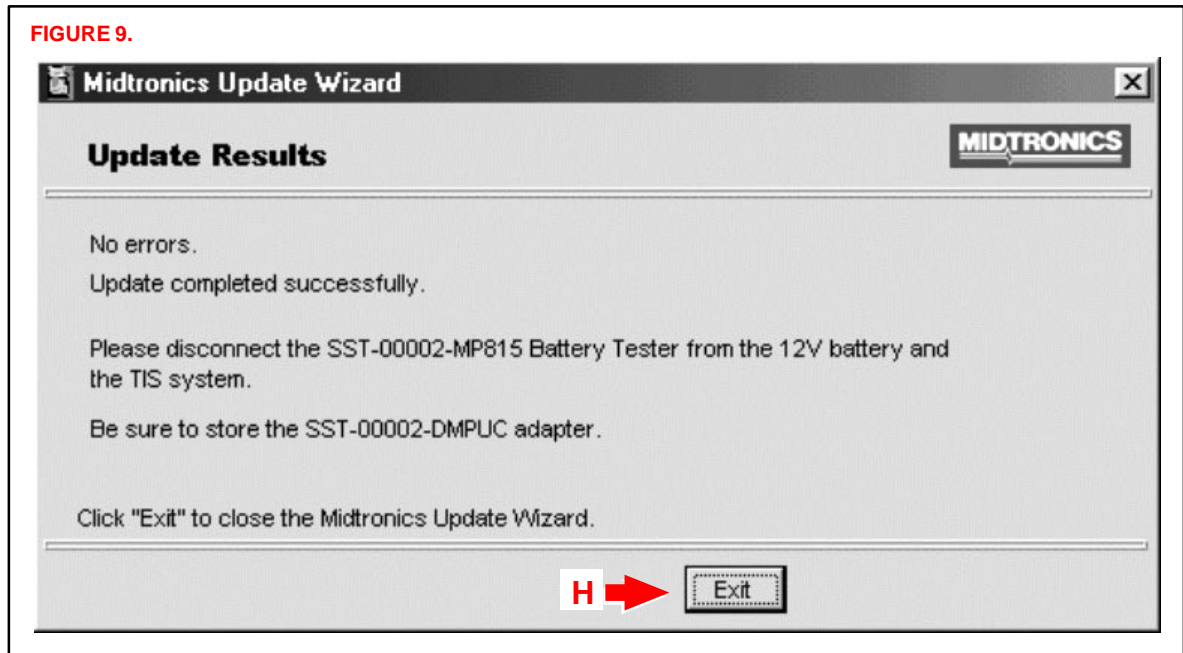
FIGURE 8.



**Operation
Procedure**
(Continued)

- H. Upon successful completion, the Update Results screen will display “No errors” and the update is now complete. Click on the “Exit” button. (Figure 9.)

FIGURE 9.



Your Midtronics Battery Tester is now updated and ready for use.

NOTE:

BE SURE TO REGULARLY CHECK TIS FOR FUTURE UPDATES:

- The Midtronics Battery Tester OE Stock Number Card will no longer be printed and shipped. It will be distributed through TIS from now on.
- Latest versions of Tester update software will be available on TIS.